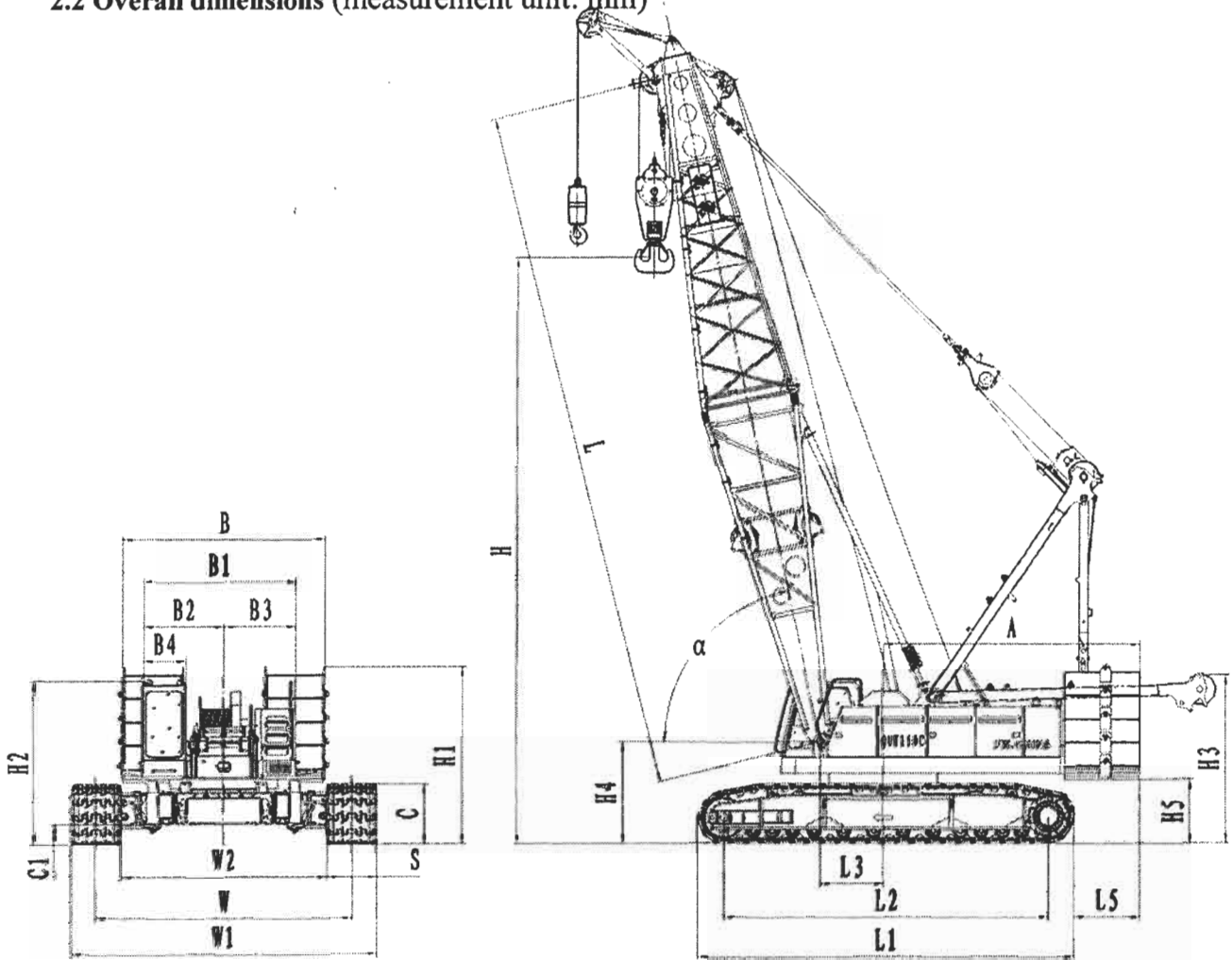
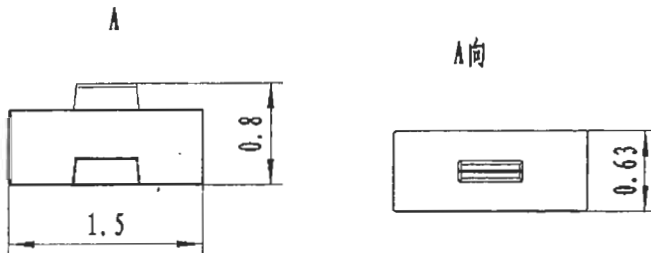
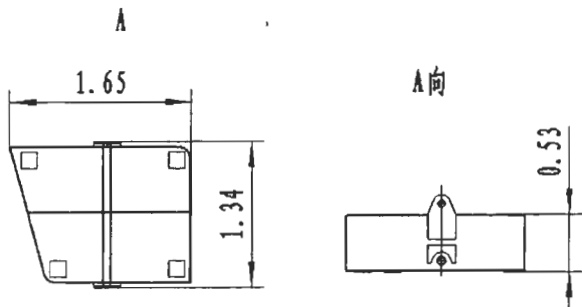
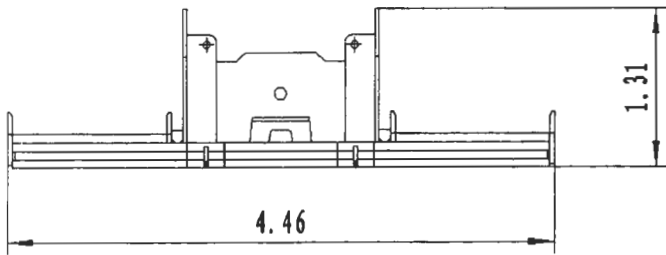
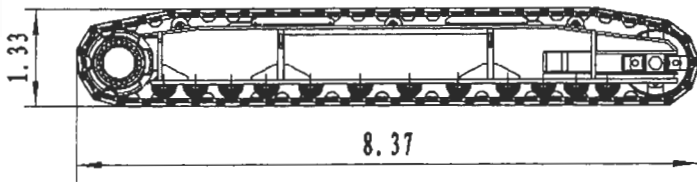
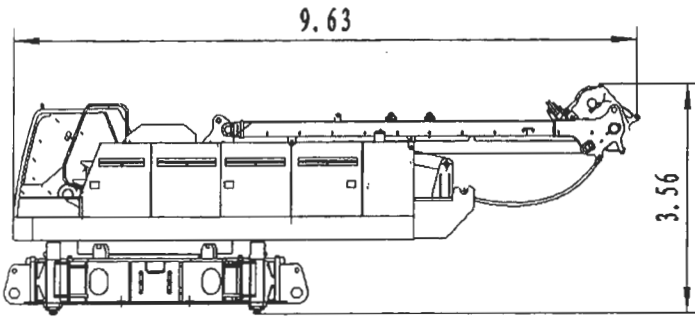


2.2 Overall dimensions (measurement unit: mm)



A: Slew radius (Tail)	-----	5659
B: Width of counterweight	-----	4456
B1: Width of superstructure	-----	3380
B2: Distance between slew center and cab outer side	-----	1787
B3: Distance between slew center and housing outer side	-----	1593
B4: Width of cab	-----	920
C: Height of crawler	-----	1325
C1: Height of chassis above the ground	-----	443
H: Maximum hoisting height with boom	-----	13000
H1: Height of counterweight	-----	3948
H2: Height of cab	-----	3634
H3: Height of lowered sheave on A-Frame above the ground	-----	3630
H4: Height of boom foot hinge above the ground	-----	2196
H5: Height of superstructure above the ground	-----	1424
L: basic boom length	-----	15200
L1: Length of crawler	-----	8365
L2: Distance between axles (of drive sprocket and guide wheel) in tandem	-----	7200
L3: Distance between boom foot hinge and slew center	-----	1400
S: Width of track shoe	-----	1100
W: Crawler's gauge	-----	5630
W1: Undercarriage width	-----	6730
W2: Distance between crawlers	-----	4530
α: Boom elevation angle	-----	30° to 80°
Gross mass: 152 ton (including 15.2m basic boom, 56t basic counterweight, and 10.2t central ballast)		

2.3 Transportation dimensions and weights



Cranebody ×1	Data
Length	9.63m
Width	3.38m
Height	3.56m
Weight	45000kg

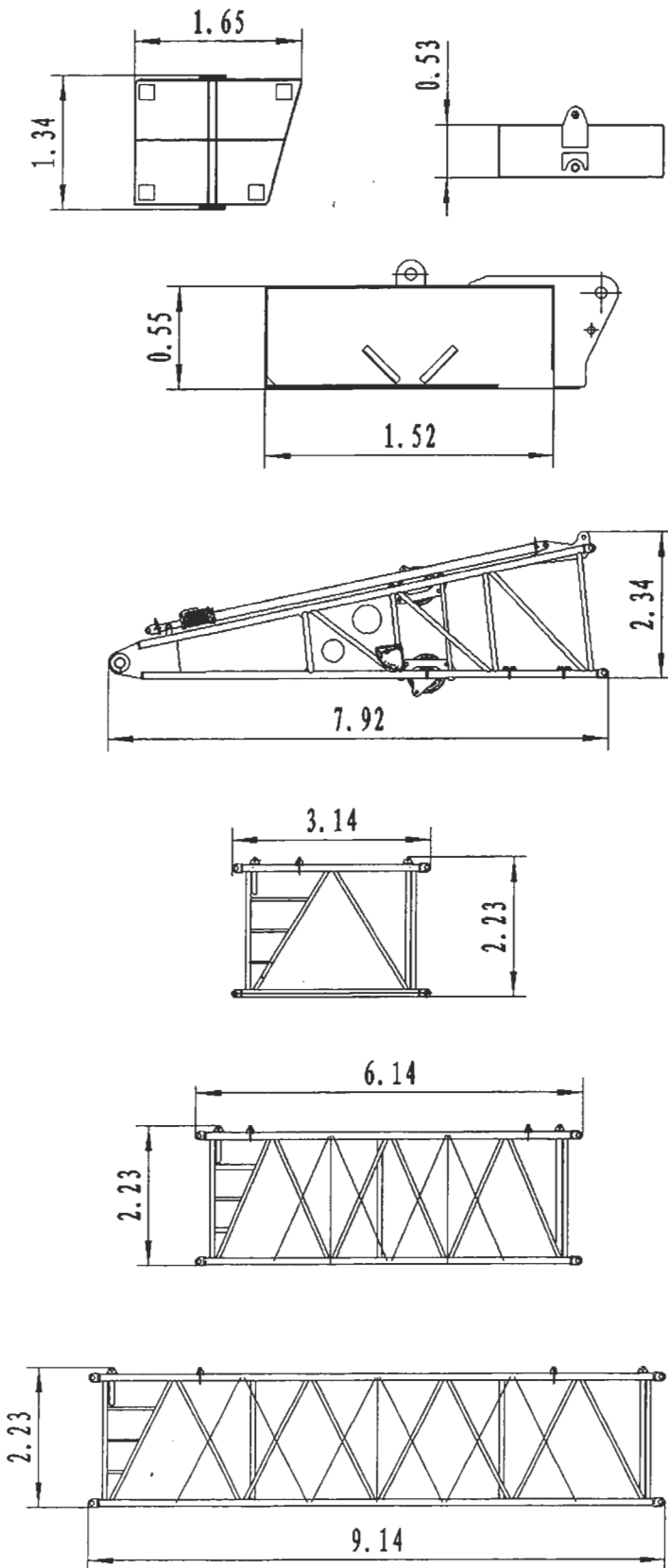
(including platform, chassis, front winch, rear winch, derricking winch, A-frame, central ballast, jack-up outriggers)

Crawler assembly ×2	Data
Length	8.37m
Width	1.52m
Height	1.33m
Weight	20400kg

Counterweight A (tray) ×1	Data
Length	4.46m
Width	1.66m
Height	1.31m
Weight	12526kg

Counterweight B ×4	Data
Length	1.65m
Width	1.34m
Height	0.53m
Weight	4707kg

Counterweight C ×2	Data
Length	1.5m
Width	0.63m
Height	0.8m
Weight	2827kg



Counterweight D ×4	Data
Length	1.65m
Width	1.34m
Height	0.53m
Weight	4707kg

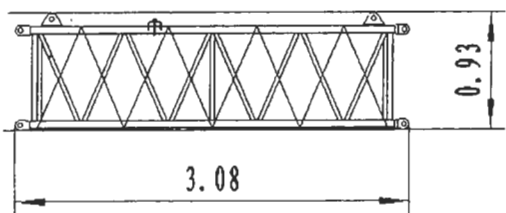
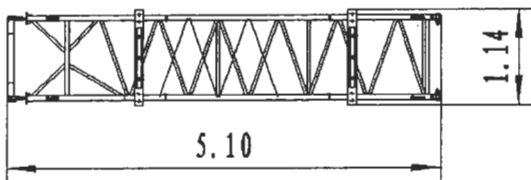
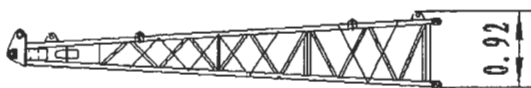
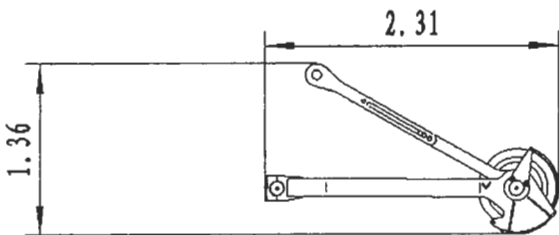
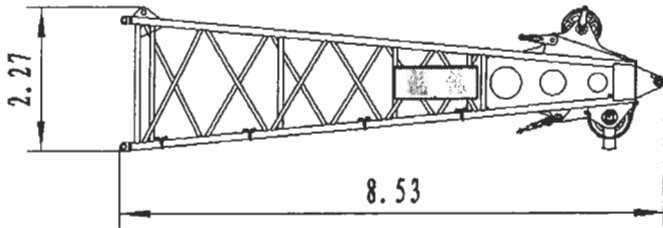
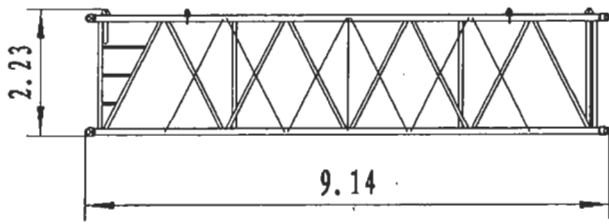
Central ballast ×2	Data
Length	1.62m
Width	1.52m
Height	0.55m
Weight	5100kg

Boom foot ×1	Data
Length	7.92m
Width	2.13m
Height	2.34m
Weight	3366kg

3m boom insert ×2	Data
Length	3.14m
Width	2.13m
Height	2.23m
Weight	688kg

6m boom insert×1	Data
Length	6.14m
Width	2.13m
Height	2.23m
Weight	970kg

Heavy-duty 9m boom insert ×4	Data
Length	9.14m
Width	2.13m
Height	2.23m
Weight	1269kg



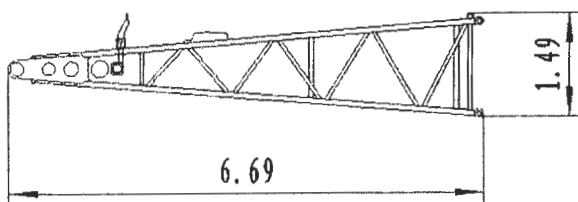
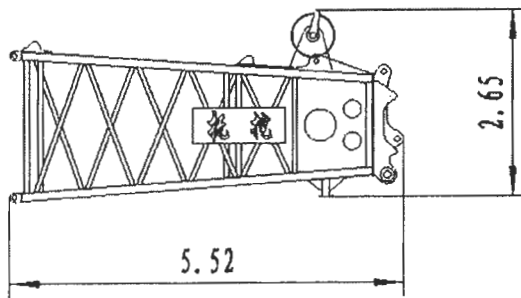
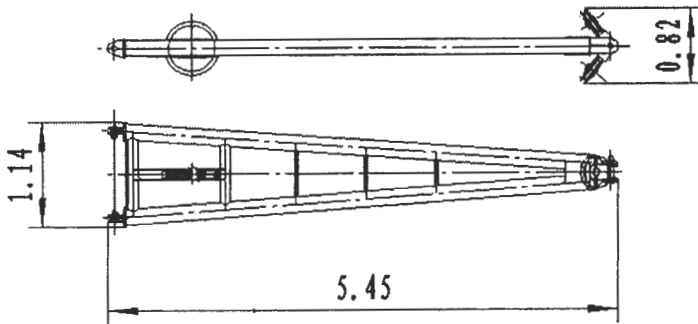
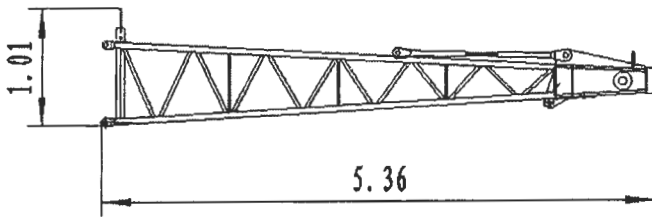
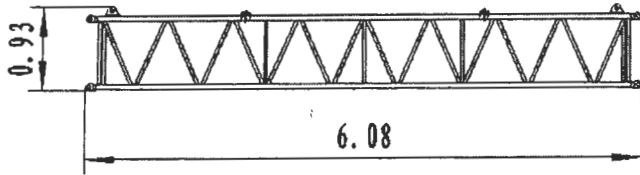
Light-duty 9m boom insert ×2	Data
Length	9.14m
Width	2.13m
Height	2.23m
Weight	1186kg

Boom head ×1	Data
Length	8.53m
Width	2.13m
Height	2.27m
Weight	2827kg

Runner ×1	Data
Length	2.31m
Width	1.11m
Height	1.36m
Weight	426kg

Jib foot ×1	Data
Length	5.10m
Width	1.14m
Height	0.92m
Weight	259kg

3m jib insert ×1	Data
Length	3.08m
Width	1.14m
Height	0.93m
Weight	198kg



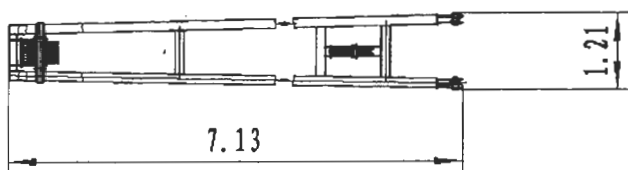
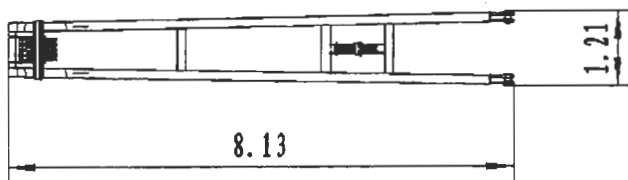
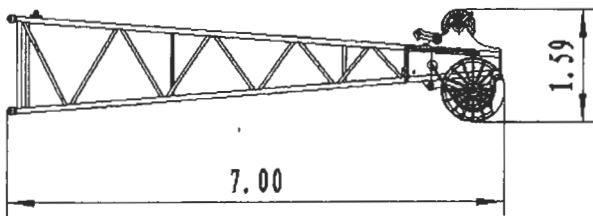
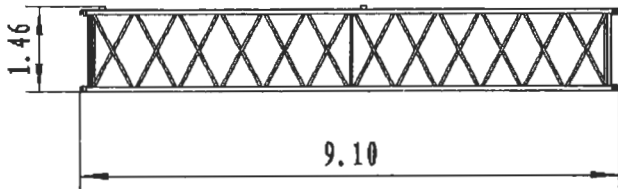
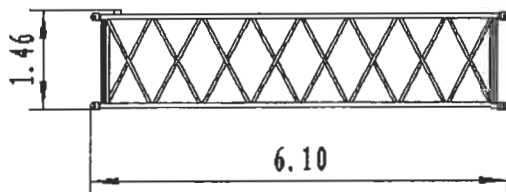
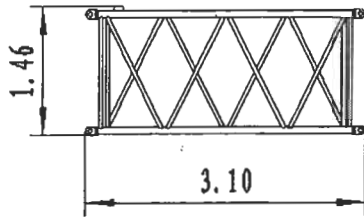
6m jib insert ×3	Data
Length	6.08m
Width	1.14m
Height	0.93m
Weight	331kg

Jib head ×1	Data
Length	5.36m
Width	0.86m
Height	1.01m
Weight	320kg

Jib strut ×1	Data
Length	5.45m
Width	1.14m
Height	0.82m
Weight	440kg

Boom head for luffing jib ×1	Data
Length	5.52m
Width	2.13m
Height	2.65m
Weight	1997kg

Luffing jib foot ×1	Data
Length	6.69m
Width	1.57m
Height	1.49m
Weight	1168kg



3m luffing jib insert ×1	Data
Length	3.10m
Width	1.40m
Height	1.46m
Weight	316kg

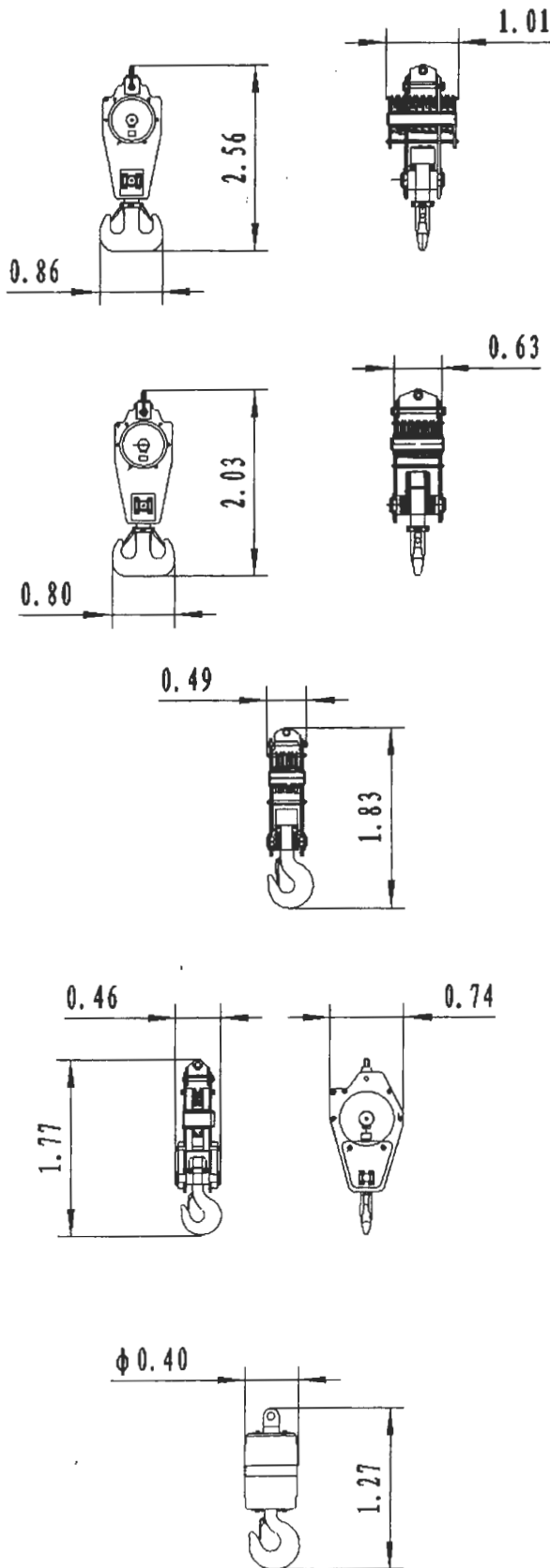
6m luffing jib insert ×3	Data
Length	6.10m
Width	1.40m
Height	1.46m
Weight	471kg

9m luffing jib insert ×2	Data
Length	9.10m
Width	1.40m
Height	1.46m
Weight	667kg

Luffing jib head ×1	Data
Length	7.00m
Width	1.40m
Height	1.59m
Weight	1050kg

Luffing jib front strut ×1	Data
Length	8.13m
Width	1.21m
Height	0.79m
Weight	1245kg

Luffing jib rear strut ×1	Data
Length	7.13m
Width	1.21m
Height	0.96m
Weight	1131kg



150t hook × 1	Data
Length	2.56m
Width	0.86m
Height	1.01m
Weight	3190kg

100t hook × 1	Data
Length	2.03m
Width	0.80m
Height	0.63m
Weight	1660kg

50t hook × 1	Data
Length	1.83m
Width	0.74m
Height	0.49m
Weight	820kg

25t hook × 1	Data
Length	1.77m
Width	0.74m
Height	0.46m
Weight	830kg

12.5t hook × 1	Data
Length	1.27m
Width	0.40m
Height	0.40m
Weight	680kg

*The transport weights herein are based on design data, from which the actual dimensions may slightly vary due to manufacture error.